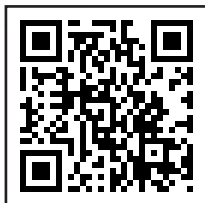


Shark **STAINFORCE**

CORDLESS STAIN-DESTROYING SYSTEM

**HX100
Series**



Scan QR code to view
HOW-TO VIDEOS.

*Product color may vary by model.

CONTENTS

Important Safety Instructions.....	3
What's Included.....	4
Getting Started.....	5
How To Clean.....	6
Tips and Tools.....	7
Emptying The Dirty Water Tank.....	8
Full Cleaning.....	9
Self-Wash Cycle.....	10
Shark Cleaning Solution.....	11
Charging Your Stainforce.....	12
Troubleshooting.....	13
Three (3) Year Limited Warranty.....	14
2 Year Limited Battery Guarantee.....	15



This marking indicates that this product should not be disposed with other household wastes throughout the UK. To prevent possible harm to the environment or human health from uncontrolled waste disposal, recycle it responsibly to promote the sustainable reuse of material sources.

To return your used device, please use the return and collection systems or contact the retailer where this product was purchased. They can take this product for environmentally safe recycling.

IMPORTANT SAFETY INSTRUCTIONS FOR HOUSEHOLD USE ONLY

READ CAREFULLY BEFORE USE. SAVE THESE INSTRUCTIONS. FOR HOUSEHOLD USE ONLY.
READ ALL INSTRUCTIONS BEFORE USING THIS SPOT AND STAIN CLEANER

⚠ WARNING TO REDUCE THE RISK OF FIRE, ELECTRIC SHOCK, INJURY, OR PROPERTY DAMAGE:

This appliance is not intended for use by persons (including children) with reduced physical, sensory or mental capabilities, or lack of experience and knowledge, unless they have been given supervision or instruction concerning use of the appliance by a person responsible for their safety. Children should be supervised to ensure that they do not play with the appliance.

General Safety and Usage Instructions

- DO NOT** put any object into openings. Do not use with any opening blocked; keep free of dust, lint, hair, and anything that may reduce air flow.
- To reduce the risk of fire or electric shock due to internal component damage, use ONLY Shark formula, as intended for use with this appliance.
- The areas around where you are cleaning may become wet. Use care to avoid slipping and falling.
- DO NOT** refill the solution sprayer with any different chemicals. Use ONLY Shark formula.
- DO NOT** operate if any exterior surface of the appliance is wet. If the appliance is wet, dry with a cloth before use.
- Before each use, carefully inspect each part for damage or wear. If a part is damaged or worn out, immediately discontinue use. **DO NOT** use if any part is damaged or if stain cleaner is not working as it should, has been dropped, left outdoors, or submerged in water.
- DO NOT** immerse or spray water on the body of the stain cleaner. To clean the surface, wipe with a dry cloth.
- DO NOT** use without the dirty water tank, tools, or filters in place.
- Use only identical Shark replacement parts. Only use Shark branded filters and accessories.
- DO NOT** place the appliance on uneven surfaces.
- DO NOT** use in the following areas:
 - Poorly lit areas.
 - Outdoor areas.
 - Spaces that are enclosed and may contain explosive or toxic fumes or vapors (lighter fluid, gasoline, kerosene, paint, paint thinners, mothproofing substances, or flammable dust).
- Keep hair, loose clothing, fingers, and all parts of the body away from openings and moving parts.
- DO NOT** store unit where temperatures reach freezing levels to avoid damaging internal parts.
- FIRST AID:** Keep out of reach of children. Causes skin and serious eye irritation. If in eyes, rinse continuously with water for minutes. Remove contact lenses if present and easy to do so. Continue rinsing. If on skin, wash with soap and water. If skin and eye irritation persists, seek medical attention.
- Please recycle container. Dispose of contents/container with licensed waste disposal site in accordance with the requirements of the local waste disposal authority. **DO NOT** dispose in drains or watercourses in concentrate form.
- This product is for use on carpets and upholstery only. Do not use on hard surfaces like wood, laminate, tile, metal, etc.
- Shark Cleaning Solution contains hydrogen peroxide, which has the potential to damage some materials like unsealed wood, tile, metal, and electronics. Use caution when spraying chemicals or storing chemical bottles. Only spray on upholstered or carpeted surfaces as intended.
- Always conduct a chemical spot test on a discreet or hidden area of the material before cleaning.

Electrical Safety Instructions

- DO NOT** modify the plug provided with the appliance. If the plug does not fit fully into the socket, reverse the plug. If it still does not fit, contact a qualified electrician.
- DO NOT** force the plug into the socket or try to modify it.
- DO NOT** pull cable, close door on cable, or wrap it around sharp edges or corners. To unplug, grasp the plug, not the cable. Keep cable away from heated surfaces.
- To reduce the risk of shock and unintended operation, turn off and unplug stain cleaner before any adjustment, cleaning, maintenance, or troubleshooting.
- DO NOT** handle plug or stain cleaner with wet hands.
- If plugging unit into extension cord, ensure cord is no more than 15 meters long to prevent damage to the unit.
- Use only Shark charger G0-1546175 or YL-1546807. Use of an incorrect charger may result in no charging, and/or unsafe conditions.
- The battery is the power source for the appliance. **DO NOT** carry the appliance with your finger on the button. **DO NOT** charge stain cleaner with the power on.

Battery Safety

- Battery should not be stored at temperatures below 3°C (37.4°F) or above 40°C (104°F) to maintain long term battery life.
 - Under abusive conditions, liquid may be ejected from the battery. Avoid contact with this liquid, as it may cause irritation or burns. If contact occurs, flush with water. If liquid contacts eyes, seek medical help.
 - The battery pack is non-serviceable. Call Customer Service with any questions and concerns.
 - DO NOT** expose stain cleaner to fire or temperature above 130°C (266°F) as it may cause explosion.
 - This appliance contains batteries that are non-replaceable
- ### Chemical and Material Safety
- DO NOT** spray solution on your skin or in your eyes.
 - DO NOT** use to pick up:
 - Large objects
 - Hard or sharp objects (glass, nails, screws, or coins)
 - Large quantities of dust (e.g., drywall dust)
 - Smoking or burning objects (hot coals, cigarette butts, or matches)
 - Flammable or combustible materials (lighter fluid, gasoline, or kerosene)
 - Toxic materials (chlorine bleach, ammonia, or drain cleaner)

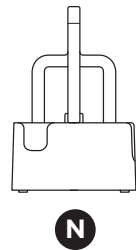
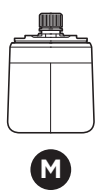
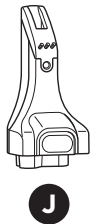
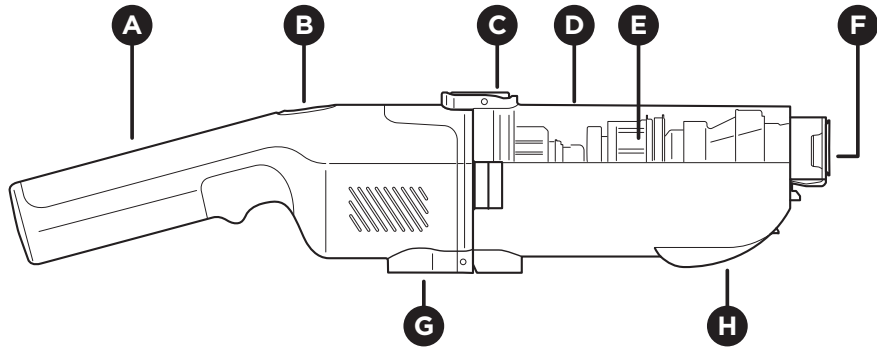
Child Safety

- DO NOT** allow appliance to be used by children or as a toy. Close supervision is necessary when used near children.
- This appliance can be used by persons with reduced physical, sensory, or mental capabilities or lack of experience or knowledge if they have been given supervision or instruction concerning use of the appliance in a safe way and understand the hazards involved. Cleaning and user maintenance shall not be done by children.

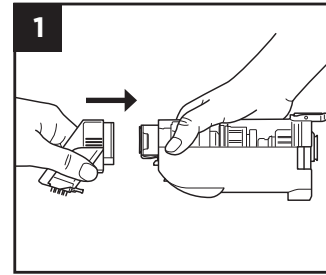
SAVE THESE INSTRUCTIONS

WHAT'S INCLUDED

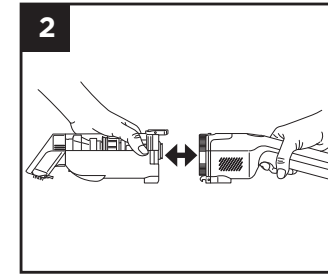
- A** Handle
- B** Power Button
- C** Dirty Water Tank Release
- D** Dirty Water Tank
- E** Water Separator Motor
- F** Hair Filter
- G** Charging Contact
- H** Quick-Pour Door
- I** Stain Tool
- J** Crevice Tool
- K** Charger
- L** Reusable Solution Sprayer
- M** Shark Refill Cartridge
- N** Storage Caddy



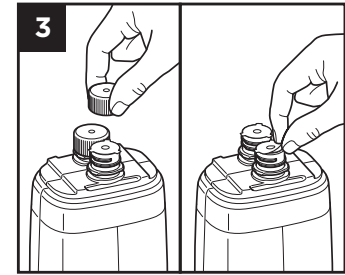
GETTING STARTED



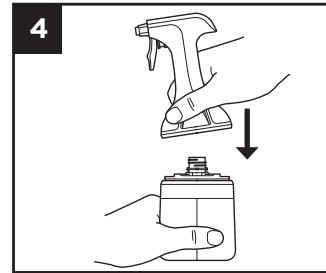
1 Align the Stain Tool with the end of the Dirty Water Tank. Insert the tool onto the tank until it clicks into place.



2 Align the handle with the other end of the tank, then insert the handle until it clicks securely into place.

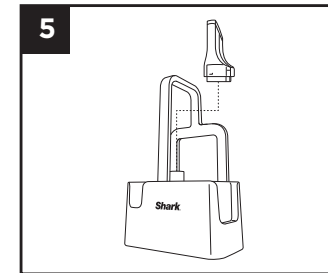


3 Twist off both caps on the Refill Cartridge, then peel off the foil seals.

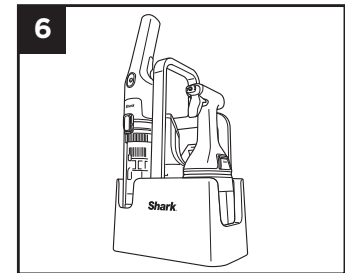


4 Press the sprayer down over the openings on top of the bottle. Make sure it clicks securely into place.

Note: It only fits one way.

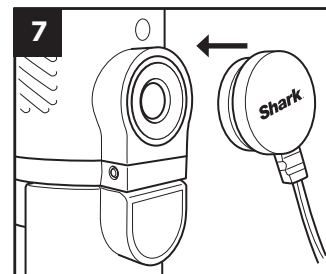


5 Place the Crevice Tool onto the Tool Post on the inside of the Caddy.



6 Place the unit and the Spray Bottle into the caddy.

Note: The StainForce can only be stored in the caddy with the Stain Tool attached.



7 Charge the unit fully before use. To begin charging, connect the charger to the port on the handle.

It can take up to 4 hours to charge completely.

NOTE: Not all accessories come with all units. Tools may vary by model. For additional accessories available, please visit sharkclean.co.uk

NOTE: Charge battery completely after every use for best results and maximum runtime next time.

HOW TO CLEAN

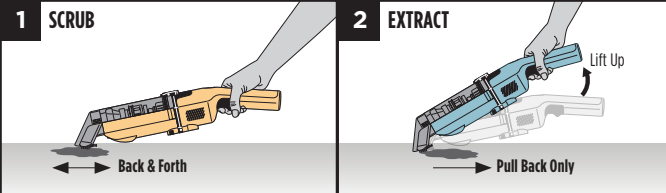
Preparing for Use:

1. Before first use, make sure to charge the unit completely. See Charging Your StainForce section for instructions.
2. StainForce is designed for cleaning carpets and upholstery only. Do not use on hard surfaces.
3. Before spraying a dry stain, vacuum the surface with a traditional vacuum cleaner to remove loose dirt.
4. Always follow instructions below for cleaning wet and dry stains.

NOTE: • When the dirty water tank is full, the unit will automatically turn off the the LED will blink white.
• Clean water is not required to use this product.

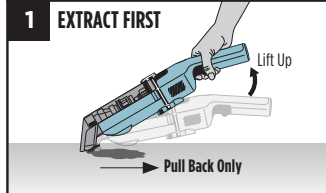
STEP 1 - PRE-TREAT

FOR DRY STAINS



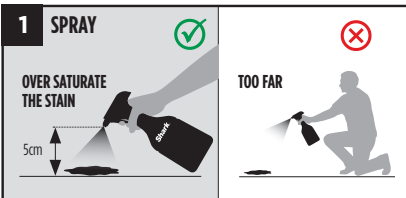
1. **Scrub first** - Break up loose particles before applying any liquid. Ensure that the bristles make full contact with the stain.
2. **Extract** - Power on. Lift handle and drag to remove dry debris, preventing it from reactivating the stain.
3. Once extracted, proceed to **Step 2 - Clean**.

FOR WET STAINS

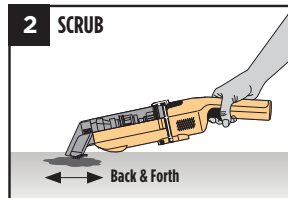


1. **Extract first** - Suction up the liquid spill to prevent spreading the stain.
2. Once extracted, proceed to **Step 2 - Clean**.

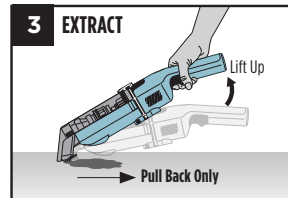
STEP 2 - CLEAN



1. **Over saturate** the stain with cleaning solution. Hold the bottle directly over the stain (2 inches) for optimal coverage.
2. Allow it to sit for a few minutes, and **spray again** to form **at least two layers of solution** before extracting.



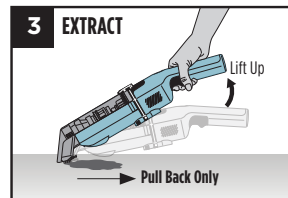
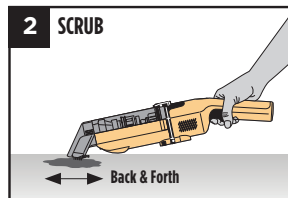
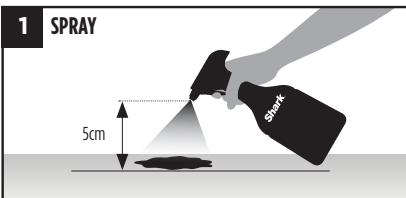
1. **Place the bristles flat** to the surface.
2. Firmly **scrub** the stain, **back and forth**.



1. Power on. **Lift the handle**, tilting the unit up.
2. **Push down firmly** to engage suction.
3. **Drag backwards** over the stain **to extract**.

STEP 3 - REPEAT (IF NECESSARY)

If you feel the stain is not fully removed, repeat **Step-2**.



TIPS AND TOOLS

Cleaning Tips:

1. To clean ink stains, scrub carefully to avoid spreading. Extract the stain immediately after spraying.
2. For older and tougher stains, let the spray solution sit for 5 minutes before extracting.
3. If a difficult stain was not removed, wait 24 hours and repeat the stain cleaning process. Very old or tough stains may require multiple attempts to fully clean.

Scan QR code
to view
HOW-TO VIDEOS.

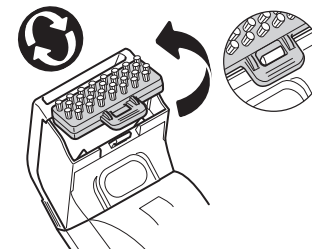


TOOL GUIDE

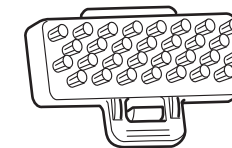
	Stain Tool	Crevice Tool
Tough Stains	✓	✓
Delicate Stains	✓ (With Hair-Gripping Fins)	
Tight Corner Stains		✓
Hair Pickup	✓ (With Hair-Gripping Fins)	
Dry Stains	✓	✓
Wet Stains	✓	✓
Self-Wash Cycle	✓	
Storage	Always on the unit	Tool post only

Included tools may vary by model.

REVERSIBLE BRISTLES

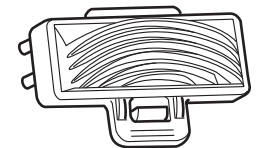


For tough stains



Bristles

For hair, light stains & delicate surfaces.



Hair-Gripping Fins

TIPS:

- Use bristles for deep cleaning and to agitate stains.
- Use Hair-Gripping Fins on delicate or hairy surfaces to prevent tangling.
- For hair removal, use short backward strokes to avoid clumping.

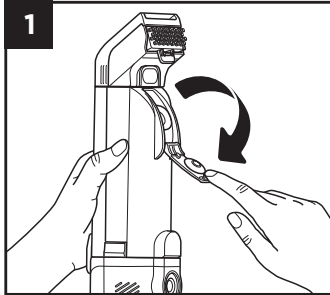
EMPTYING THE DIRTY WATER TANK

IMPORTANT

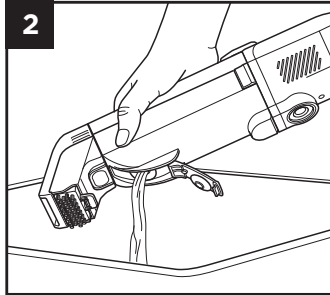
1. Always empty and clean the unit after each use. DO NOT store the unit with dirty water in the tank as this risks the build up of odors, mold and mildew.
2. After maintenance please make sure each part is installed correctly or your unit may not work properly.
3. Always charge the unit after every use.

Using the Quick-Pour Door

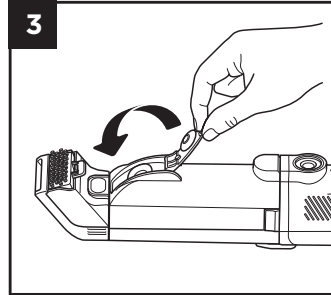
Designed to enable continuous cleaning with minimal stoppage, the quick-pour door allows you to quickly and easily empty the dirty water tank—perfect for handling large spills and stains.



Align the unit with the quick-pour door facing up. Pull down the door to open. Carry the unit to a sink or drain and pour



the dirty water out through the door. When the dirty water is completely

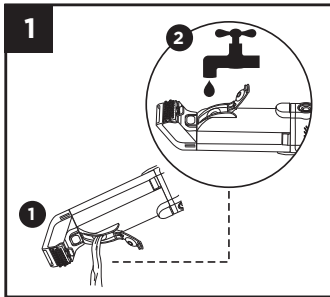


drained, close the door, pressing firmly until it clicks shut.

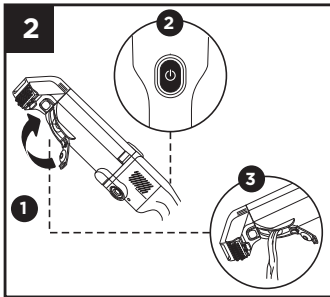
Quick Cleaning

After a light cleaning session, you can do a quick clean of your StainForce, rather than a complete clean.

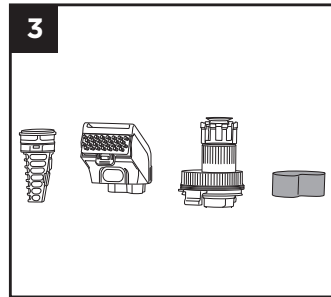
Note: (After 3 consecutive quick cleans, you will need to do a full clean.) See full cleaning section.



Empty the dirty water tank into a sink or drain, using the quick-pour door. Refill the tank with 100ml of water, adding it through the quick-pour door. Close the latch on the quick-pour door.



To activate a quick-clean cycle, press the power button and let it run for approximately 30 seconds. Turn off the power, then reopen the door and empty out the dirty water through the quick-pour door. Once fully drained, allow all parts to air dry fully.



Check the other parts and the tools and clean them if necessary, allowing them to dry fully. See the Full Cleaning section for details.

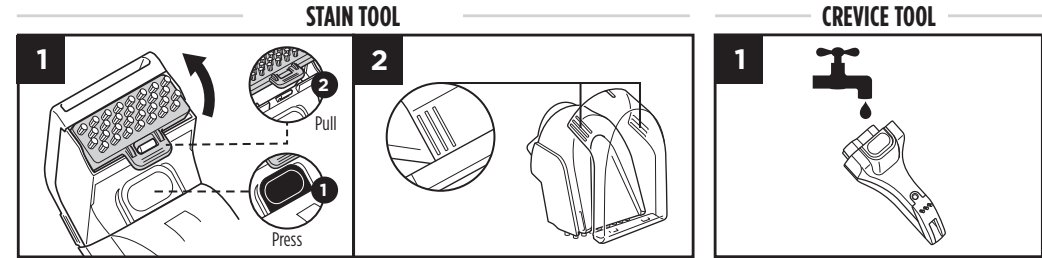
NOTE:

DO NOT submerge the handle in liquid.

Please allow all the parts to air-dry fully before reassembly.

FULL CLEANING

CLEANING THE TOOLS

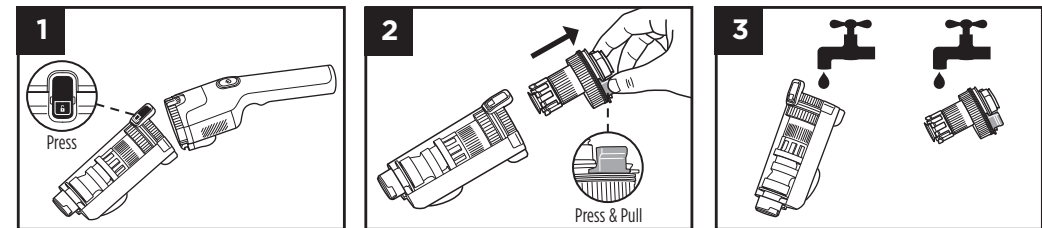


Press the release button on the tool to detach it from the water tank. Pull the tab to remove the bristles from the tool.

Press both sides of the tool to detach the window. Rinse off the bristles, tool, and window with water then allow to air dry.

Rinse off the Crevice Tool with running water, then allow it to air-dry.

CLEANING THE DIRTY WATER TANK

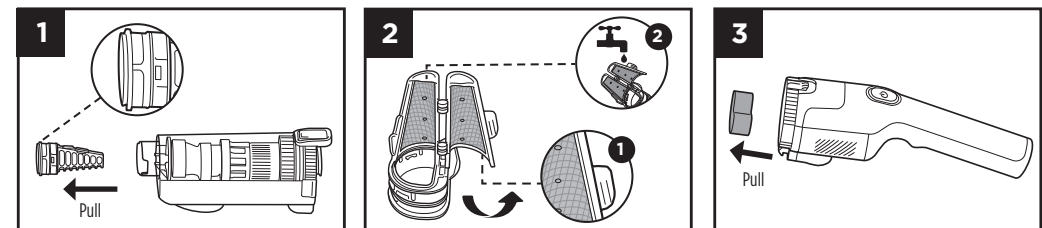


Press the release button to detach the tank from the handle.

To remove the motor from inside the tank, squeeze the tabs on both sides of the motor, then slide it out of the tank.

Wash the tank with soapy water, and rinse the colored section of the motor lightly under a tap before allowing to air dry fully.

CLEANING FILTERS



With the cleaning tools detached, remove the hair filter from the opening in the end of the water tank. Grip the tabs on both sides of the filter and pull it out.

Pull the filter open. Remove any hair or debris and rinse the filter with running water.

Pull the foam filter out of the handle. Rinse the filter with water only. Squeeze out excess water, then allow the filter to air-dry completely before reinstalling.

Do NOT submerge the handle in liquid.

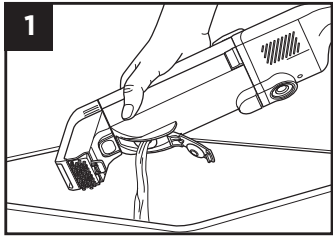
NOTE:

Make sure to inspect, rinse, and air-dry the filters after each cleaning session. Make sure to reinstall the filters before use.

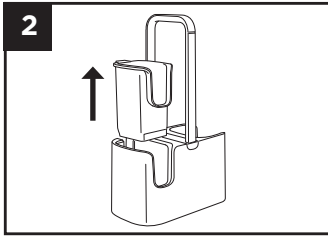
Make sure that the hair filter is properly closed before reinstalling the hair filter into place. If the tool collects debris, rinse it with water and allow it to air dry.

SELF-WASH CYCLE

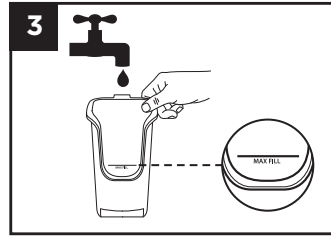
Designed for effortless maintenance, the self-wash feature helps give your StainForce a quick clean after tackling small messes.



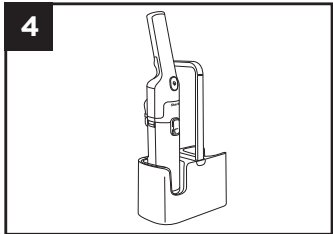
Empty the dirty water tank, using the **quick-pour** door.



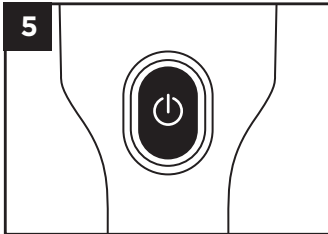
Gently squeeze the tab on the side of the self-wash caddy cup. Pull it up and out of the caddy.



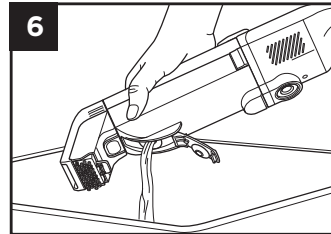
Fill the cup with clean water to the **Max Fill** line, then replace the cup in the caddy.



With the Stain Tool attached, **insert** the StainForce into the cup.



Power on your StainForce for 30 seconds.



Turn off power and remove the StainForce from the cup. Open the **quick-pour** door latch and pour the water down a drain. Repeat the cycle if needed.

NOTE: If unit needs further cleaning - follow the instructions in the Full Cleaning section.

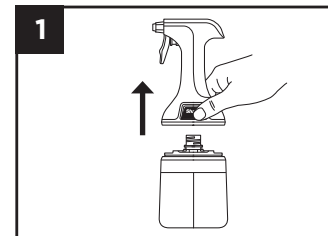
SHARK® CLEANING SOLUTION



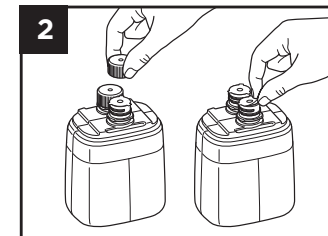
Use **ONLY** Shark branded cleaning solutions and sprayers. Your StainForce unit is not compatible with other chemical solutions or cleaners.

The Solution Sprayer is **reusable**. **DO NOT** dispose of it.

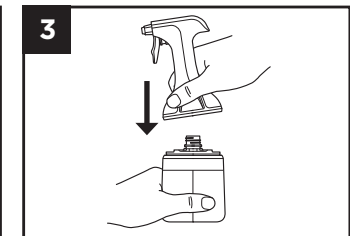
REPLACING THE CLEANING SOLUTION



Squeeze both buttons at the same time and lift to detach the reusable solution sprayer from the bottle of solution.

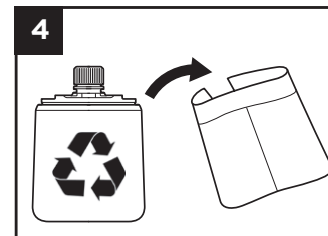


Remove both caps from the new bottle of solution, then peel off the foil seals.



Press the sprayer down over the openings in the bottle until it clicks securely into place.

Note: It only fits one way.



Remove the label from the empty solution bottle and recycle the bottle.

Running low?
Scan QR code to order replacements, or visit sharkclean.co.uk

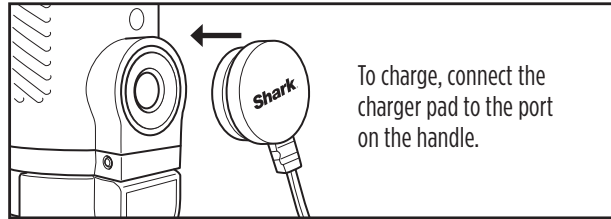


IMPORTANT: Before cleaning a surface, check the manufacturer's tag. **DO NOT** clean delicate rugs (including wool, cotton, silk, antique, or area rugs) unless they have a manufacturer's tag. If the manufacturer's tag says S or "Dry Clean Only," **DO NOT** clean that surface. If the tag says W or WS, you **CAN** use Shark Cleaning Solution on that surface.

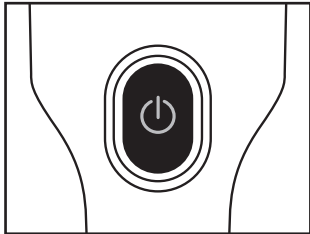
CHARGING YOUR STAINFORCE

It's important to fully charge your StainForce before using it for the first time, and after every use.

When the battery is fully charged, the power button LED will be solid green for 5 seconds.



LED INDICATOR LIGHTS




Error Warnings

Dirty Water Tank Full

 Blinking White

Dirty Water Tank Missing

 Blinking White/Red

Wrong Charger

 Blinking Red/Green

CHARGING INDICATORS

100 - 51% Charged

 Solid White

50 - 26% Charged

 Solid Orange

25 - 1% Charged


 Blinking Red

Recharge Needed

 Solid Red

Unit Charging

 Breathing Orange

Fully Charged

 Solid Green

TECHNICAL SPECIFICATIONS

HX100 Series: 14.4V DC

The standby power consumption: 0.1 W.

RECORD THIS INFORMATION

Model Number: _____

Date of Purchase: _____
 (Keep receipt)

Store of Purchase: _____

TROUBLESHOOTING

PROBLEM	SOLUTION
Low or no suction	Inspect and remove any trapped debris from the StainForce filters, cleaning tools and tank. Make sure all parts are connected securely.
Cannot Install Tool	Ensure the Hair Filter is fully closed and inserted. Tools cannot be placed on the unit without the Hair Filter present.
Cannot install spray head onto refill.	The spray head only fits in one direction, turn it around and try to click into place again.
Water Separator Motor not spinning	Remove the Water Separator Motor, clear any stuck debris. Rinse the motor with clean water and ensure it spins freely. Reassemble the unit and begin cleaning.
Unit not charging	Make sure the unit is fully charged (Ensure you are using the correct charger) Try a different socket. Wipe the charging contact on the unit with a cloth to remove any debris or build up.
Liquid is leaking from the unit	Make sure the Dirty Water Tank is correctly attached to the handle. Make sure the Quick-Pour Door is firmly closed. Remove the foam filter, and allow unit to dry before reassembly and use.
Unit is emitting air that smells bad.	Disassemble unit and perform maintenance with clean, soapy water. Allow all parts to air-dry fully before reassembling.
Debris present in the Dirty Water Tank	Disassemble your Stain Force and perform full maintenance. Reassemble the unit, ensuring that the hair filter door is closed and it is securely inserted.
Dirty Water Tank Full indicator light flashing - Tank is empty. (LED blinking white)	Remove the Water Separator Motor, clear any stuck debris. Rinse the motor with clean water and ensure it spins freely. Reassemble the unit and begin cleaning. Detach and re-attach the Dirty Water Tank.
LED blinking white Dirty Water Tank Full	Empty the Dirty Water Tank via Quick Pour, if by removing the Water Separator Motor and pouring out the dirty water.
LED alternating white/red Dirty Water Tank missing.	Install the Dirty Water Tank onto the handle. Wait 15 seconds after emptying dirty water tank before restarting the unit. Make sure the dirty water tank is completely installed on both ends and is clicked securely into place.
LED alternating red/Orange Discharge/charge protection.	Remove any blockages from the air path. Ensure you are using the correct charger.
LED Alternating blue/orange. Overheat protection	Allow the unit to cool down to room temperature for a minimum of 30 minutes before powering on.
LED blinking orange/white Water separator overcurrent protection.	Make sure the water separator motor in the dirty water tank is spinning freely. If the motor is stuck, remove it, reinstall, then try again. If the issue persists, contact Customer Service.
LED blinking Green/white Wrong Charger	Make sure you are using the included Shark charger.
LED blinking purple	Contact Customer Service.

THREE (3) YEAR LIMITED WARRANTY

THE SHARK GUARANTEE

When a consumer buys a product in the UK & ROI, they get the benefit of legal rights relating to the quality of the product (your “legal rights”). You can enforce your legal rights against your retailer, including Shark if you bought your Shark appliance from sharkclean.co.uk. However, at Shark we are so confident about the quality of our products that we give the owner an additional, free parts and labour manufacturer’s guarantee of up to 3 years. A household appliance like a Shark floorcare appliance constitutes a sizeable investment. Your new machine needs to work properly for as long as possible. The guarantee it comes with is an important consideration - and reflects how much confidence the manufacturer has in its product and manufacturing quality.

The manufacturer’s guarantee does not affect your legal rights.

The Lithium ION power pack is not covered by the 3 year guarantee (see battery guarantee on next page).

How long are new Shark machines guaranteed for?

Our manufacturer’s guarantee lasts for one year from the date of purchase as standard, or for three years if you register your purchase with us within 28 days. There is information on how to register below.

How do I register my Shark guarantee?

If you have purchased your Shark appliance directly from sharkclean.co.uk your guarantee is registered automatically. If you bought it from anywhere else, you can register your guarantee online within 28 days of purchase.

- To register online, please visit www.sharkclean.co.uk/register-guarantee or scan the QR code in your instruction manual.
- Keep a note of the date you purchased the machine.

IMPORTANT:

- Keep your receipt if you bought your Shark floorcare appliance from anywhere except sharkclean.co.uk. You will need it to claim under your guarantee.
- This free shark guarantee is only valid in the country of purchase.

What are the benefits of registering my free Shark guarantee?

When you register your guarantee, you will get an extra two years of cover. We’ll also have your details to hand if we ever need to get in touch. If you further agree to receive communications from us, you can also receive tips and advice on how to get the best out of your Shark floorcare appliance and hear the latest news about new Shark technology and launches.

What is covered by the free Shark guarantee?

Repair or replacement (at Shark’s option) of your Shark machine, including all parts and labour.

What is not covered by the free Shark guarantee?

- Normal wear and tear.
- Accidental damage or faults caused by negligent use or care, misuse, neglect, careless operation or handling of the Shark appliance which is not in accordance with the Shark Operating Manual supplied with your machine.
- Damage caused by use of the Shark appliance for anything other than normal domestic household purposes.
- Damage caused by use of parts not assembled or installed in accordance with the operating instructions.
- Damage caused by use of parts and accessories which are not Shark Genuine Components
- Faulty installation (except where installed by Shark).
- Repairs or alterations carried out by parties other than Shark or its agents.
- The Lithium ION power pack is not covered by the 3 year guarantee (see battery guarantee on next page)

How can I claim under the free Shark guarantee?

Contact our customer service helpline on 0800 862 0453. For service hours please visit our website under ‘Contact Us’. It’s free to call, and you’ll be put straight through to a Shark representative. You’ll also find online support at <https://support.sharkclean.co.uk/>. The Shark representative will go through some troubleshooting with you, and if we conclude that the item has failed, we will send you a replacement part or a returns label to send the defective item back to us free of charge. When you have delivered the defective product to us, we will send you a replacement.

Please remember that the item will need to be boxed when you return it to us, which can be any suitable box; it does not have to be the original packaging.

Where can I buy genuine Shark spares and accessories?

Shark spares and accessories are developed by the same engineers who developed your Shark floorcare appliance. You’ll find a full range of Shark spares, replacement parts and accessories for all Shark machines at www.sharkclean.co.uk. Please remember that damage caused by the use of non-Shark spares may not be covered under your guarantee.

2 YEAR LIMITED BATTERY GUARANTEE

When a consumer buys a product in the UK and ROI, they get the benefit of legal rights relating to the quality of the product (your “statutory rights”). You can enforce these rights against your retailer. However, at Shark we are so confident about the quality of our products that we give you an additional manufacturer’s guarantee of up to two years for the battery (1 year as standard plus 1 year when you register). These terms and conditions relate to our manufacturer’s guarantee only - your statutory rights are unaffected.

Every Shark machine comes with a free parts and labour guarantee. Our customer service helpline (**0800 862 0453**) is open from 9.00am to 6.00pm Monday - Friday. It’s free to call, and you’ll be put straight through to a Shark representative. You’ll also find online support at www.sharkclean.co.uk

IMPORTANT

- The manufacturer’s guarantee covers your battery for 2 years starting on the date of purchase.
- Please keep your receipt at all times. Should you need to use your guarantee we will need your receipt to verify the information you have supplied to us is correct. The inability to produce a valid receipt may invalidate your guarantee. This free Shark guarantee is only valid in the country of purchase.

How long are new Shark batteries guaranteed for?

Our confidence in our design and quality control means that your new Shark STAINFORCE battery is guaranteed for a total of one year as standard, one year on registration.

What is covered by the free Shark guarantee?

Repair or replacement of your Shark battery (at Shark’s discretion to decide whether to replace or repair) including all parts and labour. A Shark guarantee is in addition to your legal rights as a consumer.

What is not covered by the free Shark guarantee?

1. Normal wear and tear of parts which require regular maintenance and/or replacement to ensure the proper functioning of your unit.
2. Accidental damage, faults caused by negligent use or care, misuse, neglect, careless operation or handling of the Spot Cleaner which is not in accordance with the Shark Instructions supplied with your machine.
3. Use of the battery for anything other than powering the Spot Cleaner.
4. Use of parts not assembled or installed in accordance with the instructions.
5. Use of parts and accessories which are not Shark spares.
6. Faulty installation (except where installed by Shark).

Where can I buy genuine Shark spares and accessories?

Shark spares and accessories are developed by the same engineers who developed your Shark Spot Cleaner. You’ll find a full range of Shark spares, replacement parts and accessories for all Shark machines at www.sharkclean.co.uk.

Please remember that damage caused by use of non-Shark spares is not covered under your guarantee.

RECYCLING THE LI-ION BATTERY

When the Shark Li-ion battery needs to be replaced, dispose of it or recycle it in accordance with local ordinances or regulations. In some areas, it is illegal to place spent lithium-ion batteries in the standard rubbish bin. Return spent batteries to an authorised recycle centre or to the retailer for recycling. Contact your local recycling centre for information on where to drop the spent battery.

SHARK is a registered trademark in the United Kingdom of SharkNinja Operating LLC.

**SharkNinja Europe Limited,
1st/2nd Floor Building 3150,
Thorpe Park, Century Way,
Leeds, England, LS15 8ZB
+44 (0)800 862 0453
www.sharkclean.co.uk**

**SharkNinja Germany GmbH,
Rotfeder-Ring 9,
60327 Frankfurt am Main,
Germany
www.sharkclean.eu**

